

## DYM Rabbit Polyclonal Antibody

### Description

Product type	Primary Antibody
Code	BT-AP09381
Host	Rabbit
Isotype	IgG
Size	20ul, 50ul, 100ul
Immunogen	Synthesized peptide derived from human DYM
Mol wt	73590
Species reactivity	Human, Mouse, Rat
Clonality	Polyclonal
Recommended application	WB
Concentration	1 mg/ml
Full name	DYM
Synonyms	DYM

This product is for research use only, not for use in human, therapeutic or diagnostic procedure.

### Background

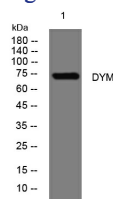
This gene encodes a protein which is necessary for normal skeletal development and brain function. Mutations in this gene are associated with two types of recessive osteochondrodysplasia| Dyggve-Melchior-Clausen (DMC) dysplasia and Smith-McCort (SMC) dysplasia| which involve both skeletal defects and mental retardation.

### Recommended Dilution

WB: 1: 500 - 1: 2000

Not yet tested in other applications.

### Images



Western blot analysis of lysates from KB cells, primary antibody was diluted at 1:1000, 4°C overnight

### Storage

-20°C for 1 year

501 Changsheng S Rd, Nanhu Dist, Jiaxing, Zhejiang, China

Tel: 86 21 31007137 | E-mail: [save@bt-laboratory.com](mailto:save@bt-laboratory.com) | [www.bt-laboratory.com](http://www.bt-laboratory.com)