

## GALR2 Polyclonal Antibody

### Description

Product type	Primary Antibody
Code	BT-AP09384
Host	Rabbit
Isotype	IgG
Size	20ul, 50ul, 100ul
Immunogen	Synthetic Peptide of GALR2
Mol wt	N/A
Species reactivity	Human, Rat, Mouse
Clonality	Polyclonal
Recommended application	WB
Concentration	1 mg/ml
Full name	Galanin receptor type 2
Synonyms	Galanin receptor type 2 ;GAL2-R;GALR-2; GALR2; GALNR2; Galanin receptor type 2; GAL2-R; GALR-2

This product is for research use only, not for use in human, therapeutic or diagnostic procedure.

### Background

Galanin is an important neuromodulator present in the brain, gastrointestinal system, and hypothalamopituitary axis. It is a 30-amino acid non-C-terminally amidated peptide that potently stimulates growth hormone secretion, inhibits cardiac vagal slowing of heart rate, abolishes sinus arrhythmia, and inhibits postprandial gastrointestinal motility. The actions of galanin are mediated through interaction with specific membrane receptors that are members of the 7-transmembrane family of G protein-coupled receptors. GALR2 interacts with the N-terminal residues of the galanin peptide. The primary signaling mechanism for GALR2 is through the phospholipase C/protein kinase C pathway (via Gq), in contrast to GALR1, which communicates its intracellular signal by inhibition of adenylyl cyclase through Gi. However, it has been demonstrated that GALR2 couples efficiently to both the Gq and Gi proteins to simul

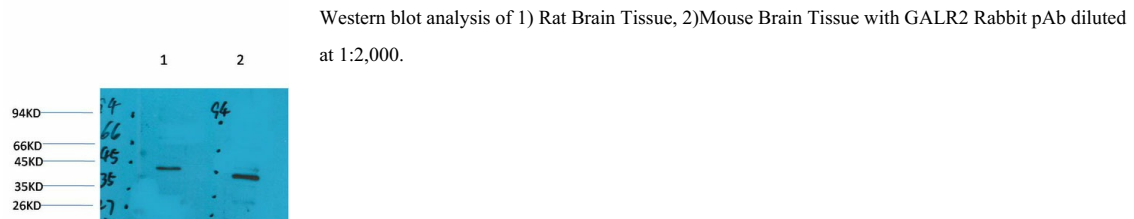
### Recommended Dilution

WB: 1: 500 - 1000

ELISA: 1: 20000

Not yet tested in other applications.

### Images



### Storage

-20°C for 1 year