

UBPH Polyclonal Antibody

Description

Product type	Primary Antibody
Code	BT-AP09389
Host	Rabbit
Isotype	IgG
Size	20ul, 50ul, 100ul
Immunogen	The antiserum was produced against synthesized peptide derived from human UBFD1. AA range:135-184
Mol wt	56896
Species reactivity	Human, Mouse, Rat
Clonality	Polyclonal
Recommended application	WB, ELISA
Concentration	1 mg/ml
Full name	UBPH Antibody
Synonyms	UBFD1; UBPH; Ubiquitin domain-containing protein UBFD1; Ubiquitin-binding protein homolog

This product is for research use only, not for use in human, therapeutic or diagnostic procedure.

Background

UBFD1 (Ubiquitin Family Domain Containing 1) is a Protein Coding gene. GO annotations related to this gene include poly (A) RNA binding.

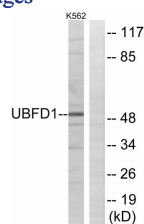
Recommended Dilution

WB: 1: 500 - 1: 2000

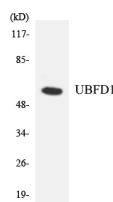
ELISA: 1: 10000

Not yet tested in other applications.

Images



Western blot analysis of lysates from K562 cells, using UBFD1 Antibody. The lane on the right is blocked with the synthesized peptide.



Western blot analysis of the lysates from COLO205 cells using UBFD1 antibody.

Storage

-20°C for one year