

## Ubr1 Polyclonal Antibody

### Description

<b>Product type</b>	Primary Antibody
<b>Code</b>	BT-AP09391
<b>Host</b>	Rabbit
<b>Isotype</b>	IgG
<b>Size</b>	20ul, 50ul, 100ul
<b>Immunogen</b>	The antiserum was produced against synthesized peptide derived from human UBR1. AA range:821-870
<b>Mol wt</b>	40248
<b>Species reactivity</b>	Human, Mouse
<b>Clonality</b>	Polyclonal
<b>Recommended application</b>	WB, IHC-p, ELISA
<b>Concentration</b>	1 mg/ml
<b>Full name</b>	Ubr1 Antibody
<b>Synonyms</b>	UBR1; E3 ubiquitin-protein ligase UBR1; N-recognin-1; Ubiquitin-protein ligase E3-alpha-1; Ubiquitin-protein ligase E3-alpha-I

This product is for research use only, not for use in human, therapeutic or diagnostic procedure.

### Background

The N-end rule pathway is one proteolytic pathway of the ubiquitin system. The recognition component of this pathway, encoded by UBR1, binds to a destabilizing N-terminal residue of a substrate protein and participates in the formation of a substrate-linked multiubiquitin chain. This leads to the eventual degradation of the substrate protein. E3 ubiquitin-protein ligase UBR1 described in this record has a RING-type zinc finger and a UBR-type zinc finger. Mutations in this gene have been associated with Johanson-Blizzard syndrome.

### Recommended Dilution

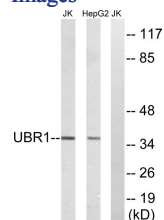
WB: 1: 500 - 1: 2000

IHC: 1: 100 - 1: 300

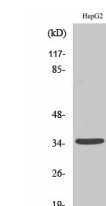
ELISA: 1: 20000

Not yet tested in other applications.

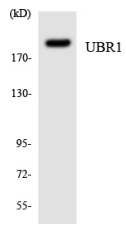
### Images



Western blot analysis of lysates from HepG2 and Jurkat cells, using UBR1 Antibody. The lane on the right is blocked with the synthesized peptide.



Western Blot analysis of various cells using Ubr1 Polyclonal Antibody diluted at 1:2000. Secondary antibody was diluted at 1:20000



Western blot analysis of the lysates from HUVEC cells using UBR1 antibody.

### Storage

-20°C for one year

501 Changsheng S Rd, Nanhu Dist, Jiaxing, Zhejiang, China

Tel: 86 21 31007137 | E-mail: [save@bt-laboratory.com](mailto:save@bt-laboratory.com) | [www.bt-laboratory.com](http://www.bt-laboratory.com)