

UBTD1 Polyclonal Antibody

Description

Product type	Primary Antibody
Code	BT-AP09395
Host	Rabbit
Isotype	IgG
Size	20ul, 50ul, 100ul
Immunogen	The antiserum was produced against synthesized peptide derived from human UBTD1. AA range:151-200
Mol wt	25938
Species reactivity	Human, Mouse, Rat
Clonality	Polyclonal
Recommended application	IHC-p, ELISA
Concentration	1 mg/ml
Full name	UBTD1 Antibody
Synonyms	UBTD1; Ubiquitin domain-containing protein 1

This product is for research use only, not for use in human, therapeutic or diagnostic procedure.

Background

The degradation of many proteins is carried out by the ubiquitin pathway in which proteins are targeted for degradation by covalent conjugation of the polypeptide ubiquitin. UBTD1 (ubiquitin domain containing 1) encodes a protein that belongs to the ubiquitin family of proteins. The encoded protein is thought to regulate E2 ubiquitin conjugating enzymes belonging to the UBE2D family.

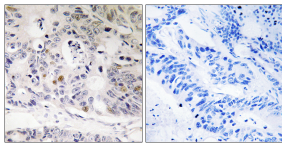
Recommended Dilution

IHC: 1: 100 - 1: 300

ELISA: 1: 20000

Not yet tested in other applications.

Images



Immunohistochemistry analysis of paraffin-embedded human colon carcinoma tissue, using UBTD1 Antibody. The picture on the right is blocked with the synthesized peptide.

Storage

-20°C for one year