

## UDP-GlcDH Polyclonal Antibody

### Description

Product type	Primary Antibody
Code	BT-AP09406
Host	Rabbit
Isotype	IgG
Size	20ul, 50ul, 100ul
Immunogen	The antiserum was produced against synthesized peptide derived from human UGDH. AA range:391-440
Mol wt	55024
Species reactivity	Human, Mouse, Rat
Clonality	Polyclonal
Recommended application	WB, IHC-p, ELISA
Concentration	1 mg/ml
Full name	UDP-GlcDH Antibody
Synonyms	UGDH; UDP-glucose 6-dehydrogenase; UDP-Glc dehydrogenase; UDP-GlcDH; UDPGDH

This product is for research use only, not for use in human, therapeutic or diagnostic procedure.

### Background

The protein encoded by UGDH (UDP-glucose 6-dehydrogenase) converts UDP-glucose to UDP-glucuronate and thereby participates in the biosynthesis of glycosaminoglycans such as hyaluronan, chondroitin sulfate, and heparan sulfate. These glycosylated compounds are common components of the extracellular matrix and likely play roles in signal transduction, cell migration, and cancer growth and metastasis. The expression of UGDH is up-regulated by transforming growth factor beta and down-regulated by hypoxia. Alternative splicing results in multiple transcript variants.

### Recommended Dilution

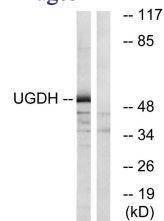
WB: 1: 500 - 1: 2000

IHC: 1: 100 - 1: 300

ELISA: 1: 10000

Not yet tested in other applications.

### Images



Western blot analysis of lysates from COLO cells, using UGDH Antibody. The lane on the right is blocked with the synthesized peptide.

### Storage

-20°C for one year