

UEV3 Polyclonal Antibody

Description

Product type	Primary Antibody
Code	BT-AP09407
Host	Rabbit
Isotype	IgG
Size	20ul, 50ul, 100ul
Immunogen	The antiserum was produced against synthesized peptide derived from human UEVLD. AA range:141-190
Mol wt	52264
Species reactivity	Human
Clonality	Polyclonal
Recommended application	WB, IHC-p, ELISA
Concentration	1 mg/ml
Full name	UEV3 Antibody
Synonyms	UEVLD; UEV3; Ubiquitin-conjugating enzyme E2 variant 3; UEV-3; EV and lactate/malate dehydrogenase domain-containing protein

This product is for research use only, not for use in human, therapeutic or diagnostic procedure.

Background

UEVLD (UEV And Lactate/Malate Dehydrogenase Domains) is a Protein Coding gene. Among its related pathways are protein ubiquitylation. GO annotations related to this gene include oxidoreductase activity and oxidoreductase activity, acting on the CH-OH group of donors, NAD or NADP as acceptor. An important paralog of this gene is LDHC.

Recommended Dilution

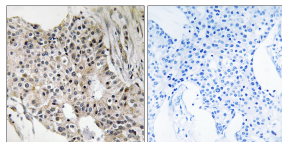
WB: 1: 500 - 1: 2000

IHC: 1: 100 - 1: 300

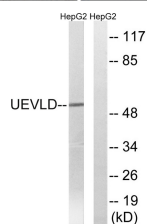
ELISA: 1: 40000

Not yet tested in other applications.

Images



Immunohistochemistry analysis of paraffin-embedded human breast carcinoma tissue, using UEVLD Antibody. The picture on the right is blocked with the synthesized peptide.



Western blot analysis of lysates from HepG2 cells, using UEVLD Antibody. The lane on the right is blocked with the synthesized peptide.

Storage

-20°C for one year

501 Changsheng S Rd, Nanhu Dist, Jiaxing, Zhejiang, China

Tel: 86 21 31007137 | E-mail: save@bt-laboratory.com | www.bt-laboratory.com