

## ULK3 Polyclonal Antibody

### Description

<b>Product type</b>	Primary Antibody
<b>Code</b>	BT-AP09416
<b>Host</b>	Rabbit
<b>Isotype</b>	IgG
<b>Size</b>	20ul, 50ul, 100ul
<b>Immunogen</b>	The antiserum was produced against synthesized peptide derived from human ULK3. AA range:141-190
<b>Mol wt</b>	24402
<b>Species reactivity</b>	Human, Mouse
<b>Clonality</b>	Polyclonal
<b>Recommended application</b>	WB, IHC-p, ELISA
<b>Concentration</b>	1 mg/ml
<b>Full name</b>	ULK3 Antibody
<b>Synonyms</b>	ULK3; Serine/threonine-protein kinase ULK3; Unc-51-like kinase 3

**This product is for research use only, not for use in human, therapeutic or diagnostic procedure.**

### Background

Serine/threonine protein kinase which enhances GLI1 and GLI2 transcriptional activity and consequently positively regulates GLI-dependent SHH signaling. May exert this function by promoting GLI1 nuclear localization. Phosphorylates in vitro GLI2, as well as GLI1 and GLI3, although less efficiently.

### Recommended Dilution

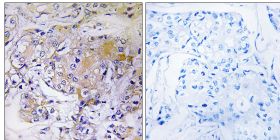
WB: 1: 500 - 1: 2000

IHC: 1: 100 - 1: 300

ELISA: 1: 20000

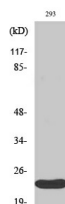
Not yet tested in other applications.

### Images

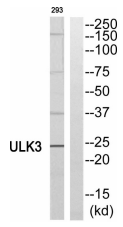


Immunohistochemistry analysis of paraffin-embedded human breast carcinoma, using ULK3 Antibody. The lane on the right is blocked with the ULK3 peptide.

Immunohistochemistry analysis of paraffin-embedded human breast carcinoma tissue, using ULK3 Antibody. The picture on the right is blocked with the synthesized peptide.



Western Blot analysis of various cells using ULK3 Polyclonal Antibody diluted at 1:1000. Secondary antibody was diluted at 1:20000



Western blot analysis of ULK3 Antibody. The lane on the right is blocked with the ULK3 peptide.

### Storage

-20°C for one year

501 Changsheng S Rd, Nanhu Dist, Jiaxing, Zhejiang, China

Tel: 86 21 31007137 | E-mail: [save@bt-laboratory.com](mailto:save@bt-laboratory.com) | [www.bt-laboratory.com](http://www.bt-laboratory.com)