

## GBLP Polyclonal Antibody

### Description

<b>Product type</b>	Primary Antibody
<b>Code</b>	BT-AP09421
<b>Host</b>	Rabbit
<b>Isotype</b>	IgG
<b>Size</b>	20ul, 50ul, 100ul
<b>Immunogen</b>	Synthesized peptide derived from part region of human protein
<b>Mol wt</b>	N/A
<b>Species reactivity</b>	Human, Rat, Mouse
<b>Clonality</b>	Polyclonal
<b>Recommended application</b>	WB, ELISA
<b>Concentration</b>	1 mg/ml
<b>Full name</b>	Guanine nucleotide-binding protein subunit beta-2-like 1
<b>Synonyms</b>	Guanine nucleotide-binding protein subunit beta-2-like 1 ;Cell proliferation-inducing gene 21 protein;Guanine nucleotide-binding protein subunit beta-like protein 12.3;Human lung cancer oncogene 7

**This product is for research use only, not for use in human, therapeutic or diagnostic procedure.**

### Background

The WD repeats domain 5 mediates interaction with TRIM63. Seems to bind protein kinase C acting as an intracellular receptor to anchor the activated PKC to the cytoskeleton. May be involved in up-regulation of the activity of kinases such as PKC via binding to KRT1. Together with KRT1 and ITGB1, serves as a platform for SRC activation or inactivation. May play an important role in the developing brain and neuronal differentiation. Belongs to the WD repeat G protein beta family. Contains 7 WD repeats. subcellular location: Located on plasma membrane of neuroblastoma NMB7 cells. subunit: Binds SLC9A3R1. Forms a ternary complex with TRIM63 and PRKCE. Interacts with HABP4 and KRT1.

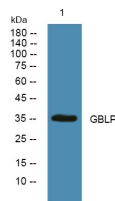
### Recommended Dilution

WB: 1: 500 - 1: 2000

ELISA: 1: 5000 - 1: 20000

Not yet tested in other applications.

### Images



Western blot analysis of lysates from SW480 cells, primary antibody was diluted at 1:1000, 4°C overnight

### Storage

-20°C for 1 year