

UROC28 Polyclonal Antibody

Description

Product type	Primary Antibody
Code	BT-AP09427
Host	Rabbit
Isotype	IgG
Size	20ul, 50ul, 100ul
Immunogen	The antiserum was produced against synthesized peptide derived from human PBOV1. AA range:31-80
Mol wt	15722
Species reactivity	Human
Clonality	Polyclonal
Recommended application	WB, IHC-p, IF, ELISA
Concentration	1 mg/ml
Full name	UROC28 Antibody
Synonyms	PBOV1; UROC28; Prostate and breast cancer overexpressed gene 1 protein; Protein UROC28; UC28

This product is for research use only, not for use in human, therapeutic or diagnostic procedure.

Background

This intronless gene PBOV1 (prostate and breast cancer overexpressed 1) encodes a protein of unknown function. Its expression is up-regulated in some types of cancer, including prostate, breast, and bladder cancer.

Recommended Dilution

WB: 1: 500 - 1: 2000

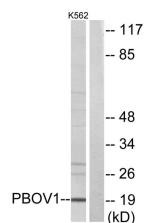
IHC: 1: 100 - 1: 300

IF: 1: 200 - 1: 1000

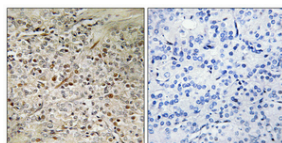
ELISA: 1: 40000

Not yet tested in other applications.

Images



Western blot analysis of lysates from K562 cells, using PBOV1 Antibody. The lane on the right is blocked with the synthesized peptide.



Immunohistochemical analysis of paraffin-embedded Human prostate cancer. Antibody was diluted at 1:100(4° overnight). High-pressure and temperature Tris-EDTA,pH8.0 was used for antigen retrieval. Negative contrl (right) obtained from antibody was pre-absorbed by immunogen peptide.

Storage

-20°C for one year