

USF-2 Polyclonal Antibody

Description

Product type	Primary Antibody
Code	BT-AP09432
Host	Rabbit
Isotype	IgG
Size	20ul, 50ul, 100ul
Immunogen	The antiserum was produced against synthesized peptide derived from human USF2. AA range:196-245
Mol wt	36955
Species reactivity	Human, Mouse, Rat
Clonality	Polyclonal
Recommended application	WB, IHC-p, ELISA
Concentration	1 mg/ml
Full name	USF-2 Antibody
Synonyms	USF2; BHLHB12; Upstream stimulatory factor 2; Class B basic helix-loop-helix protein 12; bHLHb12; FOS-interacting protein; FIP; Major late transcription factor 2; Upstream transcription factor 2

This product is for research use only, not for use in human, therapeutic or diagnostic procedure.

Background

USF2 encodes a member of the basic helix-loop-helix leucine zipper family of transcription factors. The upstream stimulatory factor 2 can activate transcription through pyrimidine-rich initiator (Inr) elements and E-box motifs and is involved in regulating multiple cellular processes.

Recommended Dilution

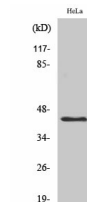
WB: 1: 500 - 1: 2000

IHC: 1: 100 - 1: 300

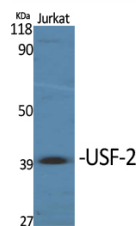
ELISA: 1: 20000

Not yet tested in other applications.

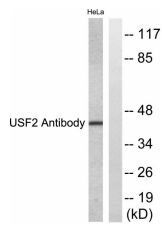
Images



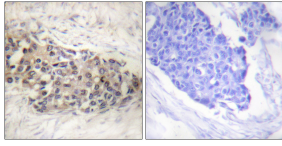
Western Blot analysis of HeLa cells using USF-2 Polyclonal Antibody. Secondary antibody was diluted at 1:20000 cells nucleus.



Western Blot analysis of various cells using USF-2 Polyclonal Antibody. Secondary antibody was diluted at 1:20000 cells nucleus.



Western blot analysis of lysates from HeLa cells, using USF2 Antibody. The lane on the right is blocked with the synthesized peptide.



Immunohistochemistry analysis of paraffin-embedded human breast carcinoma tissue, using USF2 Antibody. The picture on the right is blocked with the synthesized peptide.

Storage

-20°C for one year

501 Changsheng S Rd, Nanhu Dist, Jiaxing, Zhejiang, China

Tel: 86 21 31007137 | E-mail: save@bt-laboratory.com | www.bt-laboratory.com