

USP11 Polyclonal Antibody

Description

Product type	Primary Antibody
Code	BT-AP09433
Host	Rabbit
Isotype	IgG
Size	20ul, 50ul, 100ul
Immunogen	Synthesized peptide derived from the Internal region of human USP11.
Mol wt	105031
Species reactivity	Human, Mouse, Rat
Clonality	Polyclonal
Recommended application	IF, WB, ELISA
Concentration	1 mg/ml
Full name	USP11 Antibody
Synonyms	USP11; UHX1; Ubiquitin carboxyl-terminal hydrolase 11; Deubiquitinating enzyme 11; Ubiquitin thioesterase 11; Ubiquitin-specific-processing protease 11

This product is for research use only, not for use in human, therapeutic or diagnostic procedure.

Background

USP11 (Ubiquitin Specific Peptidase 11) is a Protein Coding gene. Among its related pathways are Transport to the Golgi and subsequent modification and Chaperonin-mediated protein folding. GO annotations related to this gene include cysteine-type endopeptidase activity and thiol-dependent ubiquitinyl hydrolase activity. An important paralog of this gene is USP4. rotease that can remove conjugated ubiquitin from target proteins and polyubiquitin chains (PubMed: 12084015, PubMed: 15314155, PubMed: 17897950, PubMed: 19874889, PubMed: 20233726, PubMed: 24724799). Inhibits the degradation of target proteins by the proteasome (PubMed: 12084015). Cleaves preferentially Lys-6 and Lys-63-linked ubiquitin chains. Has lower activity with Lys-11 and Lys-33-linked ubiquitin chains, and extremely low activity with Lys-27, Lys-29 and Lys-48-linked ubiquitin chains (in vitro) (PubMed: 24724799). Plays a role in the regulation of pathways leading to NF-kappa-B activation (PubMed: 17897950, PubMed: 19874889). Plays a role in the regulation of DNA repair after double-stranded DNA breaks (PubMed: 15314155, PubMed: 20233726).

Recommended Dilution

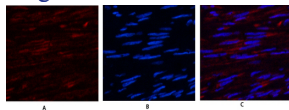
WB: 1: 500 - 1: 2000

ELISA: 1: 20000

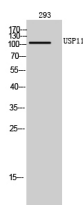
IF: 1: 50 - 200

Not yet tested in other applications.

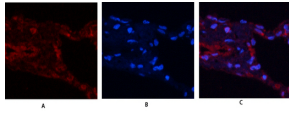
Images



Immunofluorescence analysis of human-uterus tissue. 1, USP11 Polyclonal Antibody (red) was diluted at 1:200 (4° overnight). 2, Cy3 labeled Secondary antibody was diluted at 1:300 (room temperature, 50min). 3, Picture B: DAPI (blue) 10min. Picture A: Target. Picture B: DAPI. Picture C: merge of A+B



Western Blot analysis of 293 cells using USP11 Polyclonal Antibody. Secondary antibody was diluted at 1:20000 cells nucleus.



Immunofluorescence analysis of human-lung tissue. 1,USP11 Polyclonal Antibody(red) was diluted at 1:200(4° overnight). 2, Cy3 labeled Secondary antibody was diluted at 1:300(room temperature, 50min), 3, Picture B: DAPI(blue) 10min. Picture A:Target. Picture B: DAPI. Picture C: merge of A+B

Storage

-20°C for one year

501 Changsheng S Rd, Nanhu Dist, Jiaxing, Zhejiang, China

Tel: 86 21 31007137 | E-mail: save@bt-laboratory.com | www.bt-laboratory.com