

USP15 Polyclonal Antibody

Description

Product type	Primary Antibody
Code	BT-AP09435
Host	Rabbit
Isotype	IgG
Size	20ul, 50ul, 100ul
Immunogen	The antiserum was produced against synthesized peptide derived from human USP15. AA range:81-130
Mol wt	112419
Species reactivity	Human, Mouse, Rat
Clonality	Polyclonal
Recommended application	WB, ELISA
Concentration	1 mg/ml
Full name	USP15 Antibody
Synonyms	USP15; KIAA0529; Ubiquitin carboxyl-terminal hydrolase 15; Deubiquitinating enzyme 15; Ubiquitin thioesterase 15; Ubiquitin-specific-processing protease 15; Unph-2; Unph4

This product is for research use only, not for use in human, therapeutic or diagnostic procedure.

Background

USP15 (ubiquitin specific peptidase 15) encodes a member of the ubiquitin specific protease (USP) family of deubiquitinating enzymes. USP enzymes play critical roles in ubiquitin-dependent processes through polyubiquitin chain disassembly and hydrolysis of ubiquitin-substrate bonds. The encoded protein associates with the COP9 signalosome, and also plays a role in transforming growth factor beta signalling through deubiquitination of receptor-activated SMAD transcription factors. Alternatively spliced transcript variants encoding multiple isoforms have been observed for USP15, and a pseudogene of this gene is located on the long arm of chromosome 2.

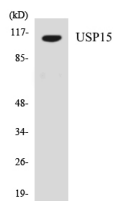
Recommended Dilution

WB: 1: 500 - 1: 2000

ELISA: 1: 10000

Not yet tested in other applications.

Images



Western blot analysis of the lysates from HeLa cells using USP15 antibody.

Storage

-20°C for one year