

USP16 Polyclonal Antibody

Description

Product type	Primary Antibody
Code	BT-AP09436
Host	Rabbit
Isotype	IgG
Size	20ul, 50ul, 100ul
Immunogen	Synthesized peptide derived from the Internal region of human USP16.
Mol wt	93570
Species reactivity	Human, Mouse, Rat
Clonality	Polyclonal
Recommended application	WB, ELISA
Concentration	1 mg/ml
Full name	USP16 Antibody
Synonyms	USP16; MSTP039; Ubiquitin carboxyl-terminal hydrolase 16; Deubiquitinating enzyme 16; Ubiquitin thioesterase 16; Ubiquitin-processing protease UBP-M; Ubiquitin-specific-processing protease 16

This product is for research use only, not for use in human, therapeutic or diagnostic procedure.

Background

USP16 encodes a deubiquitinating enzyme that is phosphorylated at the onset of mitosis and then dephosphorylated at the metaphase/anaphase transition. It can deubiquitinate H2A, one of two major ubiquitinated proteins of chromatin, in vitro and a mutant form of the protein was shown to block cell division. Alternate transcriptional splice variants, encoding different isoforms, have been characterized.

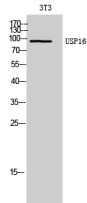
Recommended Dilution

WB: 1: 500 - 1: 2000

ELISA: 1: 10000

Not yet tested in other applications.

Images



Western Blot analysis of 3T3 cells using USP16 Polyclonal Antibody. Secondary antibody was diluted at 1:20000

Storage

-20°C for one year