

USP36 Polyclonal Antibody

Description

Product type	Primary Antibody
Code	BT-AP09441
Host	Rabbit
Isotype	IgG
Size	20ul, 50ul, 100ul
Immunogen	The antiserum was produced against synthesized peptide derived from human USP36. AA range:501-550
Mol wt	122652
Species reactivity	Human
Clonality	Polyclonal
Recommended application	WB, IHC-p, ELISA
Concentration	1 mg/ml
Full name	USP36 Antibody
Synonyms	USP36; KIAA1453; Ubiquitin carboxyl-terminal hydrolase 36; Deubiquitinating enzyme 36; Ubiquitin thioesterase 36; Ubiquitin-specific-processing protease 36

This product is for research use only, not for use in human, therapeutic or diagnostic procedure.

Background

USP36 (ubiquitin specific peptidase 36) encodes a member of the peptidase C19 or ubiquitin-specific protease family of cysteine proteases. Members of this family remove ubiquitin molecules from polyubiquitinated proteins. The encoded protein may deubiquitinate and stabilize the transcription factor c-Myc, also known as MYC, an important oncoprotein known to be upregulated in most human cancers. The encoded protease may also regulate the activation of autophagy. USP36 exhibits elevated expression in some breast and lung cancers.

Recommended Dilution

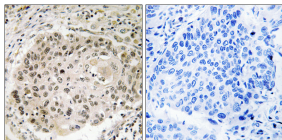
WB: 1: 500 - 1: 2000

IHC: 1: 100 - 1: 300

ELISA: 1: 40000

Not yet tested in other applications.

Images



Immunohistochemistry analysis of paraffin-embedded human lung carcinoma, using USP36 Antibody. The picture on the right is blocked with the synthesized peptide.

Storage

-20°C for one year