

## USP40 Polyclonal Antibody

### Description

Product type	Primary Antibody
Code	BT-AP09443
Host	Rabbit
Isotype	IgG
Size	20ul, 50ul, 100ul
Immunogen	The antiserum was produced against synthesized peptide derived from human USP40. AA range:1011-1060
Mol wt	140130
Species reactivity	Human
Clonality	Polyclonal
Recommended application	WB, IHC-p, ELISA
Concentration	1 mg/ml
Full name	USP40 Antibody
Synonyms	USP40; Ubiquitin carboxyl-terminal hydrolase 40; Deubiquitinating enzyme 40; Ubiquitin thioesterase 40; Ubiquitin-specific-processing protease 40

This product is for research use only, not for use in human, therapeutic or diagnostic procedure.

### Background

Modification of cellular proteins by ubiquitin is an essential regulatory mechanism controlled by the coordinated action of multiple ubiquitin-conjugating and deubiquitinating enzymes. USP40 belongs to a large family of cysteine proteases that function as deubiquitinating enzymes.

### Recommended Dilution

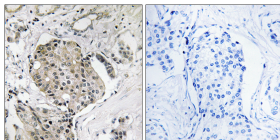
WB: 1: 500 - 1: 2000

IHC: 1: 100 - 1: 300

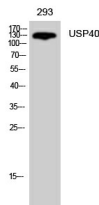
ELISA: 1: 20000

Not yet tested in other applications.

### Images



Immunohistochemistry analysis of paraffin-embedded human breast carcinoma, using USP40 Antibody. The picture on the right is blocked with the synthesized peptide.



Western Blot analysis of 293 cells using USP40 Polyclonal Antibody diluted at 1:500. Secondary antibody was diluted at 1:20000

### Storage

-20°C for one year