

USP50 Polyclonal Antibody

Description

Product type	Primary Antibody
Code	BT-AP09449
Host	Rabbit
Isotype	IgG
Size	20ul, 50ul, 100ul
Immunogen	The antiserum was produced against synthesized peptide derived from human USP50. AA range:251-300
Mol wt	38955
Species reactivity	Human, Mouse
Clonality	Polyclonal
Recommended application	WB, IHC-p, ELISA
Concentration	1 mg/ml
Full name	USP50 Antibody
Synonyms	USP50; Inactive ubiquitin carboxyl-terminal hydrolase 50; Inactive ubiquitin-specific peptidase 50

This product is for research use only, not for use in human, therapeutic or diagnostic procedure.

Background

The ubiquitin (Ub) pathway involves three sequential enzymatic steps that facilitate the conjugation of Ub and Ub-like molecules to specific protein substrates. Through the use of a wide range of enzymes that can add or remove ubiquitin, the Ub pathway controls many intracellular processes such as signal transduction, transcriptional activation and cell cycle progression. USP50 (ubiquitin specific peptidase 50) is a 339 amino acid protein that belongs to the peptidase C19 family of proteins. Weakly expressed in a few tissues, USP50 contains all of the active residues necessary to function as a deubiquitinating enzyme, but it appears to be catalytically inactive. The gene encoding USP50 maps to human chromosome 15, which houses over 700 genes and comprises nearly 3% of the human genome. Angelman syndrome, Prader-Willi syndrome, Tay-Sachs disease and Marfan syndrome are all associated with defects in chromosome 15-localized genes.

Recommended Dilution

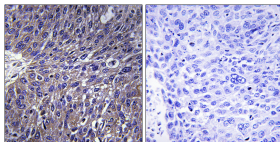
WB: 1: 500 - 1: 2000

IHC: 1: 100 - 1: 300

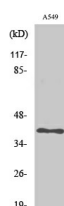
ELISA: 1: 20000

Not yet tested in other applications.

Images



Immunohistochemistry analysis of paraffin-embedded human lung carcinoma tissue, using USP50 Antibody. The picture on the right is blocked with the synthesized peptide.



Western Blot analysis of various cells using USP50 Polyclonal Antibody. Secondary antibody was diluted at 1:20000

Storage

-20°C for one year

501 Changsheng S Rd, Nanhu Dist, Jiaxing, Zhejiang, China

Tel: 86 21 31007137 | E-mail: save@bt-laboratory.com | www.bt-laboratory.com