

V1RL2 Polyclonal Antibody

Description

Product type	Primary Antibody
Code	BT-AP09456
Host	Rabbit
Isotype	IgG
Size	20ul, 50ul, 100ul
Immunogen	The antiserum was produced against synthesized peptide derived from human VN1R2. AA range:88-137
Mol wt	44476
Species reactivity	Human
Clonality	Polyclonal
Recommended application	WB, IF, ELISA
Concentration	1 mg/ml
Full name	V1RL2 Antibody
Synonyms	VN1R2; V1RL2; Vomeronasal type-1 receptor 2; G-protein coupled receptor GPCR25; hGPCR25; V1r-like receptor 2

This product is for research use only, not for use in human, therapeutic or diagnostic procedure.

Background

FUNCTION: putative pheromone receptor. **SUBCELLULAR LOCATION:** cell membrane; Multi-pass membrane protein.
MISCELLANEOUS: the chimpanzee, gorilla and orangutan orthologous proteins do not exist, their genes are pseudogenes.

Recommended Dilution

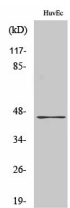
WB: 1: 500 - 1: 2000

IF: 1: 200 - 1: 1000

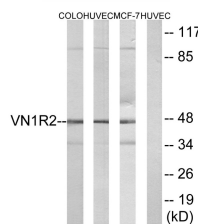
ELISA: 1: 40000

Not yet tested in other applications.

Images



Western Blot analysis of various cells using V1RL2 Polyclonal Antibody. Secondary antibody was diluted at 1:20000



Western blot analysis of lysates from HUVEC, COLO, and MCF-7 cells, using VN1R2 Antibody. The lane on the right is blocked with the synthesized peptide.

Storage

-20°C for one year

501 Changsheng S Rd, Nanhu Dist, Jiaxing, Zhejiang, China

Tel: 86 21 31007137 | E-mail: save@bt-laboratory.com | www.bt-laboratory.com