

V1RL5 Polyclonal Antibody

Description

Product type	Primary Antibody
Code	BT-AP09458
Host	Rabbit
Isotype	IgG
Size	20ul, 50ul, 100ul
Immunogen	The antiserum was produced against synthesized peptide derived from human VN1R5. AA range:44-93
Mol wt	40779
Species reactivity	Human
Clonality	Polyclonal
Recommended application	IF, ELISA
Concentration	1 mg/ml
Full name	V1RL5 Antibody
Synonyms	VN1R5; V1RL5; Vomeronasal type-1 receptor 5; G-protein coupled receptor GPCR26; hGPCR26; V1r-like receptor 5

This product is for research use only, not for use in human, therapeutic or diagnostic procedure.

Background

Putative pheromone receptor. Putative pheromone receptor. SUBCELLULAR LOCATION: Cell membrane; Multi-pass membrane protein.
POLYMORPHISM: There is an allele VN1R5*2 with a truncating mutation in position 46. It was found with a frequency of about 32%.
MISCELLANEOUS: The chimpanzee and orangutan orthologous proteins do not exist, their genes are pseudogenes.

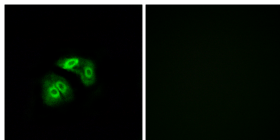
Recommended Dilution

IF: 1: 200 - 1: 1000

ELISA: 1: 20000

Not yet tested in other applications.

Images



Immunofluorescence analysis of A549 cells, using VN1R5 Antibody. The picture on the right is blocked with the synthesized peptide.

Storage

-20°C for one year