

## VAMP-1/2/3 Polyclonal Antibody

### Description

<b>Product type</b>	Primary Antibody
<b>Code</b>	BT-AP09461
<b>Host</b>	Rabbit
<b>Isotype</b>	IgG
<b>Size</b>	20ul, 50ul, 100ul
<b>Immunogen</b>	The antiserum was produced against synthesized peptide derived from human VAMP-1/2/3. AA range:21-70
<b>Mol wt</b>	12649
<b>Species reactivity</b>	Human, Mouse, Rat
<b>Clonality</b>	Polyclonal
<b>Recommended application</b>	WB, IHC-p, ELISA
<b>Concentration</b>	1 mg/ml
<b>Full name</b>	VAMP-1/2/3 Antibody
<b>Synonyms</b>	VAMP1; SYB1; Vesicle-associated membrane protein 1; VAMP-1; Synaptobrevin-1; VAMP2; SYB2; Vesicle-associated membrane protein 2; VAMP-2; Synaptobrevin-2; VAMP3; SYB3; Vesicle-associated membrane prote

**This product is for research use only, not for use in human, therapeutic or diagnostic procedure.**

### Background

Synaptobrevins, syntaxins, and the synaptosomal-associated protein SNAP25 are the main components of a protein complex involved in the docking and/or fusion of synaptic vesicles with the presynaptic membrane. The protein encoded by VAMP1 (vesicle associated membrane protein 1) is a member of the vesicle-associated membrane protein (VAMP)/synaptobrevin family. Mutations in VAMP1 are associated with autosomal dominant spastic ataxia 1. Multiple alternative splice variants have been described, but the full-length nature of some variants has not been defined.

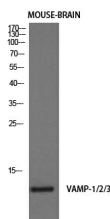
### Recommended Dilution

IHC: 1: 100 - 1: 300

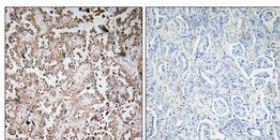
ELISA: 1: 10000

Not yet tested in other applications.

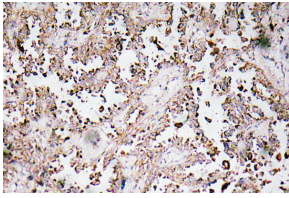
### Images



Western Blot analysis of mouse-brain cells using VAMP-1/2/3 Polyclonal Antibody diluted at 1:1000. Secondary antibody was diluted at 1:20000



Immunohistochemical analysis of paraffin-embedded Human lung cancer. Antibody was diluted at 1:100(4° overnight). High-pressure and temperature Tris-EDTA,pH8.0 was used for antigen retrieval. Negative contrl (right) obtained from antibody was pre-absorbed by immunogen peptide.



Immunohistochemistry analysis of VAMP-1/2/3 antibody in paraffin-embedded human lung carcinoma tissue.

### Storage

-20°C for one year

501 Changsheng S Rd, Nanhu Dist, Jiaxing, Zhejiang, China

Tel: 86 21 31007137 | E-mail: [save@bt-laboratory.com](mailto:save@bt-laboratory.com) | [www.bt-laboratory.com](http://www.bt-laboratory.com)