

Vangl1 Polyclonal Antibody

Description

Product type	Primary Antibody
Code	BT-AP09465
Host	Rabbit
Isotype	IgG
Size	20ul, 50ul, 100ul
Immunogen	The antiserum was produced against synthesized peptide derived from human VANGL1. AA range:301-350
Mol wt	59975
Species reactivity	Human, Mouse
Clonality	Polyclonal
Recommended application	WB, ELISA
Concentration	1 mg/ml
Full name	Vangl1 Antibody
Synonyms	VANGL1; STB2; Vang-like protein 1; Loop-tail protein 2 homolog; LPP2; Strabismus 2; Van Gogh-like protein 1

This product is for research use only, not for use in human, therapeutic or diagnostic procedure.

Background

VANGL1 encodes a member of the tetraspanin family. The vang-like protein 1 may be involved in mediating intestinal trefoil factor induced wound healing in the intestinal mucosa. Mutations in this gene are associated with neural tube defects. Alternate splicing results in multiple transcript variants.

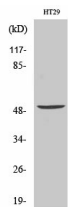
Recommended Dilution

WB: 1: 500 - 1: 2000

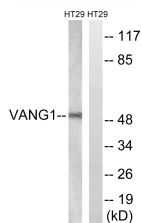
ELISA: 1: 20000

Not yet tested in other applications.

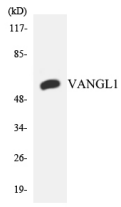
Images



Western Blot analysis of various cells using Vangl1 Polyclonal Antibody. Secondary antibody was diluted at 1:20000



Western blot analysis of lysates from HT-29 cells, using VANGL1 Antibody. The lane on the right is blocked with the synthesized peptide.



Western blot analysis of the lysates from HeLa cells using VANGL1 antibody.

Storage

-20°C for one year

501 Changsheng S Rd, Nanhu Dist, Jiaxing, Zhejiang, China

Tel: 86 21 31007137 | E-mail: save@bt-laboratory.com | www.bt-laboratory.com