

Vasohibin Polyclonal Antibody

Description

Product type	Primary Antibody
Code	BT-AP09467
Host	Rabbit
Isotype	IgG
Size	20ul, 50ul, 100ul
Immunogen	The antiserum was produced against synthesized peptide derived from human VASH1. AA range:261-310
Mol wt	40957
Species reactivity	Human, Mouse, Rat
Clonality	Polyclonal
Recommended application	WB, ELISA
Concentration	1 mg/ml
Full name	Vasohibin Antibody
Synonyms	VASH1; KIAA1036; VASH; Vasohibin-1

This product is for research use only, not for use in human, therapeutic or diagnostic procedure.

Background

Angiogenesis inhibitor. Inhibits migration, proliferation and network formation by endothelial cells as well as angiogenesis. This inhibitory effect is selective to endothelial cells as it does not affect the migration of smooth muscle cells or fibroblasts. Does not affect the proliferation of cancer cells in vitro, but inhibits tumor growth and tumor angiogenesis. Acts in an autocrine manner. Inhibits artery neointimal formation and macrophage infiltration. Exhibits heparin-binding activity.

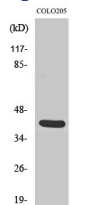
Recommended Dilution

WB: 1: 500 - 1: 2000

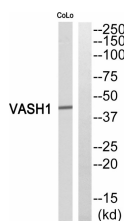
ELISA: 1: 40000

Not yet tested in other applications.

Images



Western Blot analysis of various cells using Vasohibin Polyclonal Antibody. Secondary antibody was diluted at 1:20000



Western blot analysis of VASH1 Antibody. The lane on the right is blocked with the VASH1 peptide.

Storage

-20°C for one year

501 Changsheng S Rd, Nanhu Dist, Jiaxing, Zhejiang, China

Tel: 86 21 31007137 | E-mail: save@bt-laboratory.com | www.bt-laboratory.com