

EGFL6 Rabbit Polyclonal Antibody

Description

Product type	Primary Antibody
Code	BT-AP09511
Host	Rabbit
Isotype	IgG
Size	20ul, 50ul, 100ul
Immunogen	Synthesized peptide derived from human EGFL6
Mol wt	60830
Species reactivity	Human, Mouse
Clonality	Polyclonal
Recommended application	WB
Concentration	1 mg/ml
Full name	EGFL6
Synonyms	EGFL6

This product is for research use only, not for use in human, therapeutic or diagnostic procedure.

Background

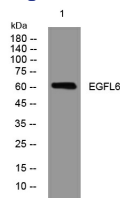
This gene encodes a member of the epidermal growth factor (EGF) repeat superfamily. Members of this superfamily are characterized by the presence of EGF-like repeats and are often involved in the regulation of cell cycle| proliferation| and developmental processes. The gene product contains a signal peptide| suggesting that it is secreted; an EGF repeat region consisting of 4 complete EGF-like repeats and 1 partial EGF-like repeat| 3 of which have a calcium-binding consensus sequence; an arg-gly-asp integrin association motif; and a MAM domain| which is believed to have an adhesive function. This gene is expressed early during development| and its expression has been detected in lung and meningioma tumors.

Recommended Dilution

WB: 1: 500 - 1: 2000

Not yet tested in other applications.

Images



Western blot analysis of lysates from DU145 cells, primary antibody was diluted at 1:1000, 4°C overnight

Storage

-20°C for 1 year