

## Versican Polyclonal Antibody

### Description

<b>Product type</b>	Primary Antibody
<b>Code</b>	BT-AP09513
<b>Host</b>	Rabbit
<b>Isotype</b>	IgG
<b>Size</b>	20ul, 50ul, 100ul
<b>Immunogen</b>	The antiserum was produced against synthesized peptide derived from human VCAN. AA range:532-581
<b>Mol wt</b>	372820
<b>Species reactivity</b>	Human
<b>Clonality</b>	Polyclonal
<b>Recommended application</b>	WB, IHC-p, ELISA
<b>Concentration</b>	1 mg/ml
<b>Full name</b>	Versican Antibody
<b>Synonyms</b>	VCAN; CSPG2; Versican core protein; Chondroitin sulfate proteoglycan core protein 2; Chondroitin sulfate proteoglycan 2; Glial hyaluronate-binding protein; GHAP; Large fibroblast proteoglycan; PG-M

**This product is for research use only, not for use in human, therapeutic or diagnostic procedure.**

### Background

VCAN is a member of the aggrecan/versican proteoglycan family. Versican core protein encoded is a large chondroitin sulfate proteoglycan and is a major component of the extracellular matrix. This protein is involved in cell adhesion, proliferation, migration and angiogenesis and plays a central role in tissue morphogenesis and maintenance. Mutations in this gene are the cause of Wagner syndrome type 1. Multiple transcript variants encoding different isoforms have been found for this gene.

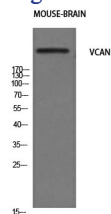
### Recommended Dilution

IHC: 1: 100 - 1: 300

ELISA: 1: 10000

Not yet tested in other applications.

### Images



Western Blot analysis of mouse-brain cells using Versican Polyclonal Antibody. Secondary antibody was diluted at 1:20000

### Storage

-20°C for one year