

EHBP1 Rabbit Polyclonal Antibody

Description

Product type	Primary Antibody
Code	BT-AP09518
Host	Rabbit
Isotype	IgG
Size	20ul, 50ul, 100ul
Immunogen	Synthesized peptide derived from human EHBP1
Mol wt	135410
Species reactivity	Human, Mouse
Clonality	Polyclonal
Recommended application	WB
Concentration	1 mg/ml
Full name	EHBP1
Synonyms	EHBP1

This product is for research use only, not for use in human, therapeutic or diagnostic procedure.

Background

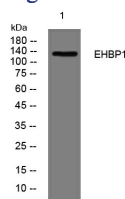
This gene encodes an Eps15 homology domain binding protein. The encoded protein may play a role in endocytic trafficking. A single nucleotide polymorphism in this gene is associated with an aggressive form of prostate cancer. Alternate splicing results in multiple transcript variants.

Recommended Dilution

WB: 1: 500 - 1: 2000

Not yet tested in other applications.

Images



Western blot analysis of lysates from MCF-7 cells, primary antibody was diluted at 1:1000, 4°C overnight

Storage

-20°C for 1 year

501 Changsheng S Rd, Nanhu Dist, Jiaxing, Zhejiang, China

Tel: 86 21 31007137 | E-mail: save@bt-laboratory.com | www.bt-laboratory.com