

VHX Polyclonal Antibody

Description

Product type	Primary Antibody
Code	BT-AP09523
Host	Rabbit
Isotype	IgG
Size	20ul, 50ul, 100ul
Immunogen	The antiserum was produced against synthesized peptide derived from human DUSP22. AA range:121-170
Mol wt	20910
Species reactivity	Human, Mouse
Clonality	Polyclonal
Recommended application	WB, IHC-p, ELISA
Concentration	1 mg/ml
Full name	VHX Antibody
Synonyms	DUSP22; JSP1; LMWDSP2; MKPX; Dual specificity protein phosphatase 22; JNK-stimulatory phosphatase-1; JSP-1; Low molecular weight dual specificity phosphatase 2; LMW-DSP2; Mitogen-activated protein kin

This product is for research use only, not for use in human, therapeutic or diagnostic procedure.

Background

DUSP22 (Dual Specificity Phosphatase 22) is a Protein Coding gene. Diseases associated with DUSP22 include lymphatic system cancer. GO annotations related to this gene include phosphatase activity and protein tyrosine/serine/threonine phosphatase activity. An important paralog of this gene is DUSP15.

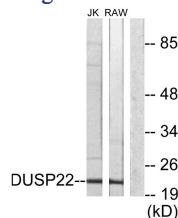
Recommended Dilution

WB: 1: 500 - 1: 2000

ELISA: 1: 10000

Not yet tested in other applications.

Images



Western blot analysis of lysates from RAW264.7 and Jurkat cells, using DUSP22 Antibody. The lane on the right is blocked with the synthesized peptide.

Storage

-20°C for one year