

Villin Polyclonal Antibody

Description

Product type	Primary Antibody
Code	BT-AP09524
Host	Rabbit
Isotype	IgG
Size	20ul, 50ul, 100ul
Immunogen	Synthesized peptide derived from Villin at AA range: 601-650
Mol wt	92695
Species reactivity	Human, Mouse, Rat
Clonality	Polyclonal
Recommended application	WB, ELISA
Concentration	1 mg/ml
Full name	Villin Antibody
Synonyms	villin 1

This product is for research use only, not for use in human, therapeutic or diagnostic procedure.

Background

VIL1 (villin 1) encodes a member of a family of calcium-regulated actin-binding proteins. This protein represents a dominant part of the brush border cytoskeleton which functions in the capping, severing, and bundling of actin filaments. Two mRNAs of 2.7 kb and 3.5 kb have been observed; they result from utilization of alternate poly-adenylation signals present in the terminal exon.

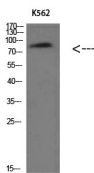
Recommended Dilution

WB: 1: 500 - 2000

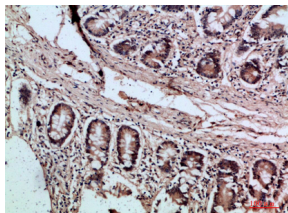
ELISA: 1: 10000 - 20000

Not yet tested in other applications.

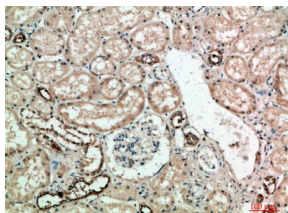
Images



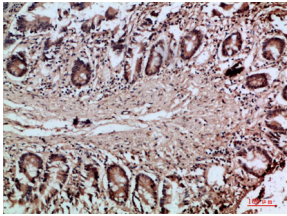
Western Blot analysis of K562 cells using Villin Polyclonal Antibody diluted at 1:500. Secondary antibody was diluted at 1:20000



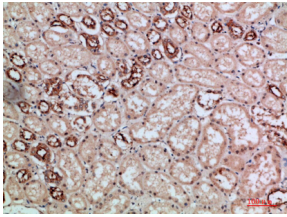
Immunohistochemical analysis of paraffin-embedded human-colon, antibody was diluted at 1:200



Immunohistochemical analysis of paraffin-embedded human-kidney, antibody was diluted at 1:200



Immunohistochemical analysis of paraffin-embedded human-colon, antibody was diluted at 1:200



Immunohistochemical analysis of paraffin-embedded human-kidney, antibody was diluted at 1:200

Storage

-20°C for one year

501 Changsheng S Rd, Nanhu Dist, Jiaxing, Zhejiang, China

Tel: 86 21 31007137 | E-mail: save@bt-laboratory.com | www.bt-laboratory.com