

## Vinculin Polyclonal Antibody

### Description

Product type	Primary Antibody
Code	BT-AP09532
Host	Rabbit
Isotype	IgG
Size	20ul, 50ul, 100ul
Immunogen	Synthetic Peptide of Vinculin
Mol wt	123799
Species reactivity	Human, Mouse, Rat
Clonality	Polyclonal
Recommended application	WB
Concentration	1 mg/ml
Full name	Vinculin Antibody
Synonyms	VCL; Vinculin; Metavinculin

This product is for research use only, not for use in human, therapeutic or diagnostic procedure.

### Background

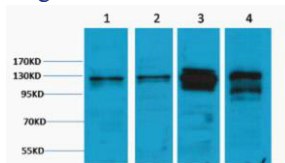
Vinculin is a cytoskeletal protein associated with cell-cell and cell-matrix junctions, where it is thought to function as one of several interacting proteins involved in anchoring F-actin to the membrane. Defects in VCL are the cause of cardiomyopathy dilated type 1W. Dilated cardiomyopathy is a disorder characterized by ventricular dilation and impaired systolic function, resulting in congestive heart failure and arrhythmia. Multiple alternatively spliced transcript variants have been found for VCL, but the biological validity of some variants has not been determined.

### Recommended Dilution

WB: 1: 1000 - 2000

Not yet tested in other applications.

### Images



Western blot analysis of 1) HeLa, 2) K562, 3) Mouse Brain, 4) Rat Brain tissue, diluted at 1:1000.

Secondary antibody was diluted at 1:20000

### Storage

-20°C for one year

501 Changsheng S Rd, Nanhu Dist, Jiaxing, Zhejiang, China

Tel: 86 21 31007137 | E-mail: [save@bt-laboratory.com](mailto:save@bt-laboratory.com) | [www.bt-laboratory.com](http://www.bt-laboratory.com)