

GNA13 Polyclonal Antibody

Description

Product type	Primary Antibody
Code	BT-AP09548
Host	Rabbit
Isotype	IgG
Size	20ul, 50ul, 100ul
Immunogen	Synthesized peptide derived from part region of human protein
Mol wt	N/A
Species reactivity	Human, Mouse
Clonality	Polyclonal
Recommended application	WB, ELISA
Concentration	1 mg/ml
Full name	Guanine nucleotide-binding protein subunit alpha-13
Synonyms	Guanine nucleotide-binding protein subunit alpha-13 ;G alpha-13;G-protein subunit alpha-13

This product is for research use only, not for use in human, therapeutic or diagnostic procedure.

Background

Guanine nucleotide-binding proteins (G proteins) are involved as modulators or transducers in various transmembrane signaling systems. PTM: Palmitoylation is critical for proper membrane localization and signaling. PTM: Phosphorylation on Thr-203 by PKA destabilizes the heterotrimer of alpha, beta and gamma, and inhibits Rho activation. Belongs to the G-alpha family. G(12) subfamily. subcellular location: Identified by mass spectrometry in melanosome fractions from stage I to stage IV. subunit: G proteins are composed of 3 units; alpha, beta and gamma. The alpha chain contains the guanine nucleotide binding site. Interacts with UBXD5.

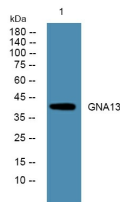
Recommended Dilution

WB: 1: 500 - 1: 2000

ELISA: 1: 5000 - 1: 20000

Not yet tested in other applications.

Images



Western blot analysis of lysates from K562 cells, primary antibody was diluted at 1:1000, 4°C overnight

Storage

-20°C for 1 year