

VPS26B Polyclonal Antibody

Description

Product type	Primary Antibody
Code	BT-AP09550
Host	Rabbit
Isotype	IgG
Size	20ul, 50ul, 100ul
Immunogen	The antiserum was produced against synthesized peptide derived from human VPS26B. AA range:231-280
Mol wt	39155
Species reactivity	Human, Mouse
Clonality	Polyclonal
Recommended application	WB, ELISA
Concentration	1 mg/ml
Full name	VPS26B Antibody
Synonyms	VPS26B; Vacuolar protein sorting-associated protein 26B; Vesicle protein sorting 26B

This product is for research use only, not for use in human, therapeutic or diagnostic procedure.

Background

Essential component of the retromer complex, a complex required to retrieve lysosomal enzyme receptors (IGF2R and M6PR) from endosomes to the trans-Golgi network. Also required to regulate transcytosis of the polymeric immunoglobulin receptor (pIgR-pIgA).

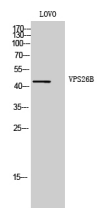
Recommended Dilution

WB: 1: 500 - 1: 2000

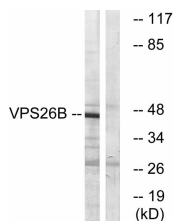
ELISA: 1: 10000

Not yet tested in other applications.

Images



Western Blot analysis of LOVO cells using VPS26B Polyclonal Antibody. Secondary antibody was diluted at 1:20000



Western blot analysis of lysates from LOVO cells, using VPS26B Antibody. The lane on the right is blocked with the synthesized peptide.

Storage

-20°C for one year