

VPS35 Polyclonal Antibody

Description

Product type	Primary Antibody
Code	BT-AP09551
Host	Rabbit
Isotype	IgG
Size	20ul, 50ul, 100ul
Immunogen	Synthesized peptide derived from VPS35 at AA range: 511-560
Mol wt	91707
Species reactivity	Human, Mouse, Rat
Clonality	Polyclonal
Recommended application	WB, ELISA
Concentration	1 mg/ml
Full name	VPS35 Antibody
Synonyms	Vacuolar protein sorting-associated protein 35 (hVPS35) (Maternal-embryonic 3) (Vesicle protein sorting 35)

This product is for research use only, not for use in human, therapeutic or diagnostic procedure.

Background

VPS35 (VPS35, retromer complex component) belongs to a group of vacuolar protein sorting (VPS) genes. The encoded protein is a component of a large multimeric complex, termed the retromer complex, involved in retrograde transport of proteins from endosomes to the trans-Golgi network. The close structural similarity between the yeast and human proteins that make up this complex suggests a similarity in function. Expression studies in yeast and mammalian cells indicate that this protein interacts directly with VPS35, which serves as the core of the retromer complex.

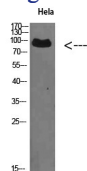
Recommended Dilution

WB: 1: 500 - 2000

ELISA: 1: 10000 - 20000

Not yet tested in other applications.

Images



Western Blot analysis of Hela cells using VPS35 Polyclonal Antibody diluted at 1:500. Secondary antibody was diluted at 1:20000

Storage

-20°C for one year