

GON2 Polyclonal Antibody

Description

Product type	Primary Antibody
Code	BT-AP09566
Host	Rabbit
Isotype	IgG
Size	20ul, 50ul, 100ul
Immunogen	Synthesized peptide derived from part region of human protein
Mol wt	N/A
Species reactivity	Human, Rat, Mouse
Clonality	Polyclonal
Recommended application	WB, ELISA
Concentration	1 mg/ml
Full name	Progonadoliberin-2
Synonyms	Progonadoliberin-2 ;Progonadoliberin II [Cleaved into: Gonadoliberin-2 ;Gonadoliberin II;Gonadotropin-releasing hormone II;GnRH II;Luliberin II;Luteinizing hormone-releasing hormone II;LH-R

This product is for research use only, not for use in human, therapeutic or diagnostic procedure.

Background

This gene encodes a secreted peptide hormone and member of the gonadotropin-releasing hormone (GnRH) family of proteins. The encoded protein regulates reproductive function by stimulating the production and release of the gonadotropins follicle-stimulating hormone (FSH) and luteinizing hormone (LH). The encoded protein may inhibit endometrial, ovarian, prostate, and breast cancer cell proliferation. Alternative splicing results in multiple transcript variants.

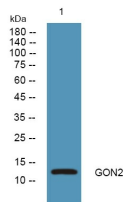
Recommended Dilution

WB: 1: 500 - 1: 2000

ELISA: 1: 5000 - 1: 20000

Not yet tested in other applications.

Images



Western blot analysis of lysates from Jarkat cells, primary antibody was diluted at 1:1000, 4°C overnight

Storage

-20°C for 1 year