

WAVE3 Polyclonal Antibody

Description

Product type	Primary Antibody
Code	BT-AP09572
Host	Rabbit
Isotype	IgG
Size	20ul, 50ul, 100ul
Immunogen	The antiserum was produced against synthesized peptide derived from human WASF3. AA range:151-200
Mol wt	55293
Species reactivity	Human, Mouse
Clonality	Polyclonal
Recommended application	WB, IHC-p, ELISA
Concentration	1 mg/ml
Full name	WAVE3 Antibody
Synonyms	WASF3; KIAA0900; SCAR3; WAVE3; Wiskott-Aldrich syndrome protein family member 3; WASP family protein member 3; Protein WAVE-3; Verprolin homology domain-containing protein 3

This product is for research use only, not for use in human, therapeutic or diagnostic procedure.

Background

WASF3 encodes a member of the Wiskott-Aldrich syndrome protein family. The gene product is a protein that forms a multiprotein complex that links receptor kinases and actin. Binding to actin occurs through a C-terminal verprolin homology domain in all family members. The multiprotein complex serves to transduce signals that involve changes in cell shape, motility or function. A pseudogene of this gene have been defined on chromosome 6. Alternative splicing results in multiple transcript variants

Recommended Dilution

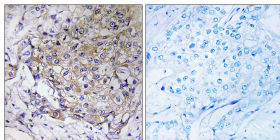
WB: 1: 500 - 1: 2000

IHC: 1: 100 - 1: 300

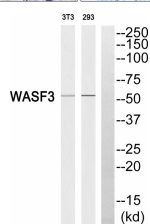
ELISA: 1: 10000

Not yet tested in other applications.

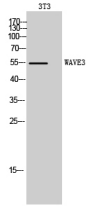
Images



Immunohistochemistry analysis of paraffin-embedded human breast carcinoma tissue, using WASF3 Antibody. The picture on the right is blocked with the synthesized peptide.



Western blot analysis of WASF3 Antibody. The lane on the right is blocked with the WASF3 peptide.



Western Blot analysis of 3T3 cells using WAVE3 Polyclonal Antibody. Secondary antibody was diluted at 1:20000

Storage

-20°C for one year

501 Changsheng S Rd, Nanhu Dist, Jiaxing, Zhejiang, China

Tel: 86 21 31007137 | E-mail: save@bt-laboratory.com | www.bt-laboratory.com