

## Wee 1 Polyclonal Antibody

### Description

<b>Product type</b>	Primary Antibody
<b>Code</b>	BT-AP09578
<b>Host</b>	Rabbit
<b>Isotype</b>	IgG
<b>Size</b>	20ul, 50ul, 100ul
<b>Immunogen</b>	The antiserum was produced against synthesized peptide derived from human WEE1. AA range:19-68
<b>Mol wt</b>	71597
<b>Species reactivity</b>	Human, Mouse, Rat
<b>Clonality</b>	Polyclonal
<b>Recommended application</b>	WB, ELISA
<b>Concentration</b>	1 mg/ml
<b>Full name</b>	Wee 1 Antibody
<b>Synonyms</b>	WEE1; Wee1-like protein kinase; WEE1hu; Wee1A kinase

**This product is for research use only, not for use in human, therapeutic or diagnostic procedure.**

### Background

WEE1 (WEE1 G2 checkpoint kinase) encodes a nuclear protein, which is a tyrosine kinase belonging to the Ser/Thr family of protein kinases. This protein catalyzes the inhibitory tyrosine phosphorylation of CDC2/cyclin B kinase, and appears to coordinate the transition between DNA replication and mitosis by protecting the nucleus from cytoplasmically activated CDC2 kinase.

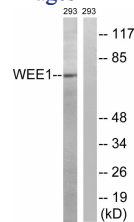
### Recommended Dilution

WB: 1: 500 - 1: 2000

ELISA: 1: 40000

Not yet tested in other applications.

### Images



Western blot analysis of lysates from 293 cells, using WEE1 Antibody. The lane on the right is blocked with the synthesized peptide.

### Storage

-20°C for one year