

Wee 2 Polyclonal Antibody

Description

Product type	Primary Antibody
Code	BT-AP09579
Host	Rabbit
Isotype	IgG
Size	20ul, 50ul, 100ul
Immunogen	The antiserum was produced against synthesized peptide derived from human WEE2. AA range:151-200
Mol wt	62919
Species reactivity	Human
Clonality	Polyclonal
Recommended application	WB, ELISA
Concentration	1 mg/ml
Full name	Wee 2 Antibody
Synonyms	WEE2; WEE1B; Wee1-like protein kinase 2; Wee1-like protein kinase 1B; Wee1B kinase

This product is for research use only, not for use in human, therapeutic or diagnostic procedure.

Background

WEE2 (WEE1 Homolog 2 (S. Pombe)) is a Protein Coding gene. Among its related pathways are Cell cycle. GO annotations related to this gene include transferase activity, transferring phosphorus-containing groups and protein tyrosine kinase activity. An important paralog of this gene is PKMYT1.

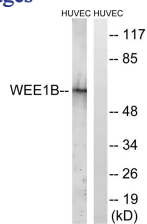
Recommended Dilution

WB: 1: 500 - 1: 2000

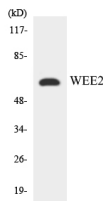
ELISA: 1: 5000

Not yet tested in other applications.

Images



Western blot analysis of lysates from HUVEC cells, using WEE2 Antibody. The lane on the right is blocked with the synthesized peptide.



Western blot analysis of the lysates from K562 cells using WEE2 antibody.

Storage

-20°C for one year

