

WIP Polyclonal Antibody

Description

Product type	Primary Antibody
Code	BT-AP09582
Host	Rabbit
Isotype	IgG
Size	20ul, 50ul, 100ul
Immunogen	The antiserum was produced against synthesized peptide derived from human WIPF1. AA range:421-470
Mol wt	51275
Species reactivity	Human, Mouse, Rat
Clonality	Polyclonal
Recommended application	WB, IHC-p, ELISA
Concentration	1 mg/ml
Full name	WIP Antibody
Synonyms	WIPF1; WASPIP; WIP; WAS/WASL-interacting protein family member 1; Protein PRPL-2; Wiskott-Aldrich syndrome protein-interacting protein; WASP-interacting protein

This product is for research use only, not for use in human, therapeutic or diagnostic procedure.

Background

WIPF1 (WAS/WASL interacting protein family member 1) encodes a protein that plays an important role in the organization of the actin cytoskeleton. The encoded protein binds to a region of Wiskott-Aldrich syndrome protein that is frequently mutated in Wiskott-Aldrich syndrome, an X-linked recessive disorder. Impairment of the interaction between these two proteins may contribute to the disease. Two transcript variants encoding the same protein have been identified for WIPF1.

Recommended Dilution

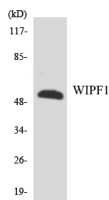
WB: 1: 500 - 1: 2000

IHC: 1: 100 - 1: 300

ELISA: 1: 5000

Not yet tested in other applications.

Images



Western blot analysis of the lysates from HT-29 cells using WIPF1 antibody.

Storage

-20°C for one year