

WIPI1 Polyclonal Antibody

Description

Product type	Primary Antibody
Code	BT-AP09583
Host	Rabbit
Isotype	IgG
Size	20ul, 50ul, 100ul
Immunogen	Synthetic Peptide of WIPI1
Mol wt	48673
Species reactivity	Human, Mouse
Clonality	Polyclonal
Recommended application	WB, ELISA
Concentration	1 mg/ml
Full name	WIPI1 Antibody
Synonyms	WD repeat domain, phosphoinositide interacting 1

This product is for research use only, not for use in human, therapeutic or diagnostic procedure.

Background

WIPI1 (WD repeat domain, phosphoinositide interacting 1) encodes a WD40 repeat protein. Members of the WD40 repeat family are key components of many essential biologic functions. They regulate the assembly of multiprotein complexes by presenting a beta-propeller platform for simultaneous and reversible protein-protein interactions. Members of the WIPI subfamily of WD40 repeat proteins have a 7-bladed propeller structure and contain a conserved motif for interaction with phospholipids. Alternative splicing results in multiple transcript variants.

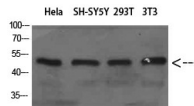
Recommended Dilution

WB: 1: 500 - 2000

ELISA: 1: 10000 - 20000

Not yet tested in other applications.

Images



Western Blot analysis of HeLa SH-SY5Y 293T 3T3 cells using WIPI1 Polyclonal Antibody diluted at 1:800.
Secondary antibody was diluted at 1:20000

Storage

-20°C for one year