

## WNK1 Polyclonal Antibody

### Description

<b>Product type</b>	Primary Antibody
<b>Code</b>	BT-AP09589
<b>Host</b>	Rabbit
<b>Isotype</b>	IgG
<b>Size</b>	20ul, 50ul, 100ul
<b>Immunogen</b>	The antiserum was produced against synthesized peptide derived from human WNK1. AA range:24-73
<b>Mol wt</b>	250756
<b>Species reactivity</b>	Human, Mouse, Rat
<b>Clonality</b>	Polyclonal
<b>Recommended application</b>	WB, IHC-p, ELISA
<b>Concentration</b>	1 mg/ml
<b>Full name</b>	WNK1 Antibody
<b>Synonyms</b>	WNK1; HSN2; KDP; KIAA0344; PRKWNK1; Serine/threonine-protein kinase WNK1; Erythrocyte 65 kDa protein; p65; Kinase deficient protein; Protein kinase lysine-deficient 1; Protein kinase with no lysine 1;

**This product is for research use only, not for use in human, therapeutic or diagnostic procedure.**

### Background

WNK1 encodes a member of the WNK subfamily of serine/threonine protein kinases. The serine/threonine-protein kinase WNK1 may be a key regulator of blood pressure by controlling the transport of sodium and chloride ions. Mutations in this gene have been associated with pseudohypoaldosteronism type II and hereditary sensory neuropathy type II. Alternatively spliced transcript variants encoding different isoforms have been described but the full-length nature of all of them has yet to be determined.

### Recommended Dilution

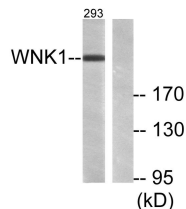
WB: 1: 500 - 1: 2000

IHC: 1: 100 - 1: 300

ELISA: 1: 10000

Not yet tested in other applications.

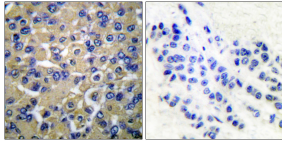
### Images



Western blot analysis of lysates from 293 cells, treated with EGF 200ng/ml 30', using WNK1 Antibody. The lane on the right is blocked with the synthesized peptide.



Western Blot analysis of various cells using WNK1 Polyclonal Antibody. Secondary antibody was diluted at 1:20000



Immunohistochemistry analysis of paraffin-embedded human breast carcinoma tissue, using WNK1 Antibody. The picture on the right is blocked with the synthesized peptide.

### Storage

-20°C for one year

501 Changsheng S Rd, Nanhu Dist, Jiaxing, Zhejiang, China

Tel: 86 21 31007137 | E-mail: [save@bt-laboratory.com](mailto:save@bt-laboratory.com) | [www.bt-laboratory.com](http://www.bt-laboratory.com)