

EMAL4 Rabbit Polyclonal Antibody

Description

Product type	Primary Antibody
Code	BT-AP09600
Host	Rabbit
Isotype	IgG
Size	20ul, 50ul, 100ul
Immunogen	Synthesized peptide derived from human EMAL4
Mol wt	107910
Species reactivity	Human, Mouse
Clonality	Polyclonal
Recommended application	WB
Concentration	1 mg/ml
Full name	EMAL4
Synonyms	EMAL4

This product is for research use only, not for use in human, therapeutic or diagnostic procedure.

Background

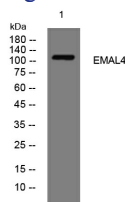
This gene is a member of the echinoderm microtubule associated protein-like family. The encoded WD-repeat protein may be involved in microtubule formation. Abnormal fusion of parts of this gene with portions of the anaplastic lymphoma receptor tyrosine kinase gene| which generates EML4-ALK fusion transcripts| is one of the primary mutations associated with non-small cell lung cancer. Alternative splicing of this gene results in two transcript variants.

Recommended Dilution

WB: 1: 500 - 1: 2000

Not yet tested in other applications.

Images



Western blot analysis of lysates from Jarkat cells, primary antibody was diluted at 1:1000, 4°C overnight

Storage

-20°C for 1 year