

WWOX Polyclonal Antibody

Description

Product type	Primary Antibody
Code	BT-AP09607
Host	Rabbit
Isotype	IgG
Size	20ul, 50ul, 100ul
Immunogen	The antiserum was produced against synthesized peptide derived from human WWOX. AA range:1-50
Mol wt	46677
Species reactivity	Human, Mouse
Clonality	Polyclonal
Recommended application	WB, IHC-p, IF, ELISA
Concentration	1 mg/ml
Full name	WWOX Antibody
Synonyms	WWOX; FOR; WOX1; WW domain-containing oxidoreductase; Fragile site FRA16D oxidoreductase

This product is for research use only, not for use in human, therapeutic or diagnostic procedure.

Background

WWOX (WW domain containing oxidoreductase) encodes a member of the short-chain dehydrogenases/reductases (SDR) protein family. WWOX spans the FRA16D common chromosomal fragile site and appears to function as a tumor suppressor gene. Expression of the encoded protein is able to induce apoptosis, while defects in this gene are associated with multiple types of cancer. Disruption of WWOX is also associated with autosomal recessive spinocerebellar ataxia 12. Disruption of a similar gene in mouse results in impaired steroidogenesis, additionally suggesting a metabolic function for the protein. Alternative splicing results in multiple transcript variants.

Recommended Dilution

WB: 1: 500 - 1: 2000

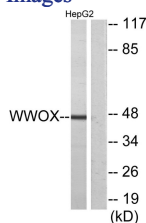
IHC: 1: 100 - 1: 300

IF: 1: 200 - 1: 1000

ELISA: 1: 20000

Not yet tested in other applications.

Images



Western blot analysis of lysates from HepG2 cells, using WWOX Antibody. The lane on the right is blocked with the synthesized peptide.

Storage

-20°C for one year