

## X11Beta Polyclonal Antibody

### Description

<b>Product type</b>	Primary Antibody
<b>Code</b>	BT-AP09609
<b>Host</b>	Rabbit
<b>Isotype</b>	IgG
<b>Size</b>	20ul, 50ul, 100ul
<b>Immunogen</b>	The antiserum was produced against synthesized peptide derived from human APBA2. AA range:371-420
<b>Mol wt</b>	82512
<b>Species reactivity</b>	Human, Mouse, Rat
<b>Clonality</b>	Polyclonal
<b>Recommended application</b>	IHC-p, WB, ELISA
<b>Concentration</b>	1 mg/ml
<b>Full name</b>	X11beta Antibody
<b>Synonyms</b>	APBA2; MINT2; X11L; Amyloid beta A4 precursor protein-binding family A member 2; Adapter protein X11beta; Neuron-specific X11L protein; Neuronal Munc18-1-interacting protein 2; Mint-2

**This product is for research use only, not for use in human, therapeutic or diagnostic procedure.**

### Background

The amyloid beta precursor protein binding family A member 2 encoded by APBA2 is a member of the X11 protein family. It is a neuronal adapter protein that interacts with the Alzheimer's disease amyloid precursor protein (APP). It stabilizes APP and inhibits production of proteolytic APP fragments including the A beta peptide that is deposited in the brains of Alzheimer's disease patients. This gene product is believed to be involved in signal transduction processes. It is also regarded as a putative vesicular trafficking protein in the brain that can form a complex with the potential to couple synaptic vesicle exocytosis to neuronal cell adhesion. Multiple transcript variants encoding different isoforms have been found for this gene.

### Recommended Dilution

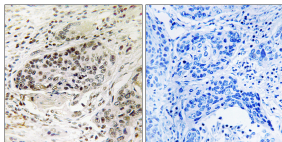
WB: 1: 500 - 2000

IHC: 1: 100 - 1: 300

ELISA: 1: 20000

Not yet tested in other applications.

### Images



Immunohistochemistry analysis of paraffin-embedded human lung carcinoma tissue, using APBA2 Antibody. The picture on the right is blocked with the synthesized peptide.

### Storage

-20°C for one year