

XE7 Polyclonal Antibody

Description

Product type	Primary Antibody
Code	BT-AP09614
Host	Rabbit
Isotype	IgG
Size	20ul, 50ul, 100ul
Immunogen	Synthesized peptide derived from XE7 . at AA range: 590-670
Mol wt	80735
Species reactivity	Human
Clonality	Polyclonal
Recommended application	WB, ELISA
Concentration	1 mg/ml
Full name	XE7 Antibody
Synonyms	AKAP17A; CXYorf3; DXYS155E; SFRS17A; XE7; A-kinase anchor protein 17A; AKAP-17A; 721P; B-lymphocyte antigen; Protein XE7; Protein kinase A-anchoring protein 17A; PRKA17A; Splicing factor; arginine/se

This product is for research use only, not for use in human, therapeutic or diagnostic procedure.

Background

This locus encodes a protein kinase A anchoring protein. The A-kinase anchor protein 17A is part of the spliceosome complex and is involved in the regulation of alternate splicing in some mRNA precursors. Alternatively spliced transcript variants have been identified for this gene.

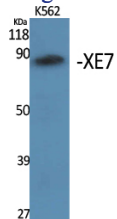
Recommended Dilution

WB: 1: 500 - 1: 2000

ELISA: 1: 40000

Not yet tested in other applications.

Images



Western Blot analysis of various cells using XE7 Polyclonal Antibody. Secondary antibody was diluted at 1:20000 cells nucleus.

Storage

-20°C for one year