

XRCC2 Polyclonal Antibody

Description

Product type	Primary Antibody
Code	BT-AP09624
Host	Rabbit
Isotype	IgG
Size	20ul, 50ul, 100ul
Immunogen	The antiserum was produced against synthesized peptide derived from human XRCC2. AA range:211-260
Mol wt	31956
Species reactivity	Human
Clonality	Polyclonal
Recommended application	WB, IHC-p, ELISA
Concentration	1 mg/ml
Full name	XRCC2 Antibody
Synonyms	XRCC2; DNA repair protein XRCC2; X-ray repair cross-complementing protein 2

This product is for research use only, not for use in human, therapeutic or diagnostic procedure.

Background

XRCC2 encodes a member of the RecA/Rad51-related protein family that participates in homologous recombination to maintain chromosome stability and repair DNA damage. This gene is involved in the repair of DNA double-strand breaks by homologous recombination and it functionally complements Chinese hamster *irs1*, a repair-deficient mutant that exhibits hypersensitivity to a number of different DNA-damaging agents.

Recommended Dilution

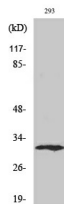
WB: 1: 500 - 1: 2000

IHC: 1: 100 - 1: 300

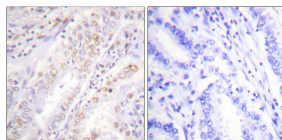
ELISA: 1: 10000

Not yet tested in other applications.

Images



Western Blot analysis of various cells using XRCC2 Polyclonal Antibody diluted at 1:2000.
Secondary antibody was diluted at 1:20000 cells nucleus.



Immunohistochemistry analysis of paraffin-embedded human lung carcinoma, using XRCC2 Antibody. The picture on the right is blocked with the synthesized peptide.

Storage

-20°C for one year

501 Changsheng S Rd, Nanhu Dist, Jiaxing, Zhejiang, China

Tel: 86 21 31007137 | E-mail: save@bt-laboratory.com | www.bt-laboratory.com