

XRCC3 Polyclonal Antibody

Description

Product type	Primary Antibody
Code	BT-AP09625
Host	Rabbit
Isotype	IgG
Size	20ul, 50ul, 100ul
Immunogen	The antiserum was produced against synthesized peptide derived from human XRCC3. AA range:41-90
Mol wt	37850
Species reactivity	Human
Clonality	Polyclonal
Recommended application	IHC-p, IF, ELISA
Concentration	1 mg/ml
Full name	XRCC3 Antibody
Synonyms	XRCC3; DNA repair protein XRCC3; X-ray repair cross-complementing protein 3

This product is for research use only, not for use in human, therapeutic or diagnostic procedure.

Background

XRCC3 encodes a member of the RecA/Rad51-related protein family that participates in homologous recombination to maintain chromosome stability and repair DNA damage. This gene functionally complements Chinese hamster irs1SF, a repair-deficient mutant that exhibits hypersensitivity to a number of different DNA-damaging agents and is chromosomally unstable. A rare microsatellite polymorphism in this gene is associated with cancer in patients of varying radiosensitivity. Alternatively spliced transcript variants encoding the same protein have been identified.

Recommended Dilution

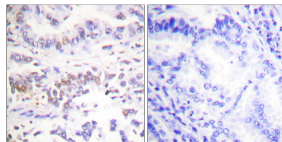
IHC: 1: 100 - 1: 300

IF: 1: 200 - 1: 1000

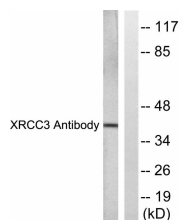
ELISA: 1: 20000

Not yet tested in other applications.

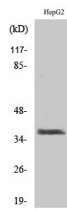
Images



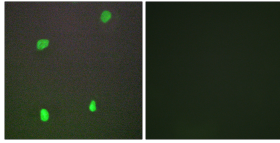
Immunohistochemistry analysis of paraffin-embedded human lung carcinoma tissue, using XRCC3 Antibody. The picture on the right is blocked with the synthesized peptide.



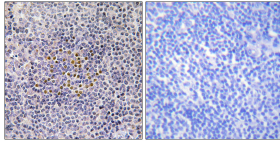
Western blot analysis of lysates from HepG2 cells, treated with Adriamycin 0.5uM 5h, using XRCC3 Antibody. The lane on the right is blocked with the synthesized peptide.



Western Blot analysis of various cells using XRCC3 Polyclonal Antibody. Secondary antibody was diluted at 1:20000 cells nucleus.



Immunofluorescence analysis of COS7 cells, using XRCC3 Antibody. The picture on the right is blocked with the synthesized peptide.



Immunohistochemistry analysis of paraffin-embedded human tonsil tissue, using XRCC3 Antibody. The picture on the right is blocked with the synthesized peptide.

Storage

-20°C for one year

501 Changsheng S Rd, Nanhu Dist, Jiaxing, Zhejiang, China

Tel: 86 21 31007137 | E-mail: save@bt-laboratory.com | www.bt-laboratory.com