

XRCC4 Polyclonal Antibody

Description

Product type	Primary Antibody
Code	BT-AP09627
Host	Rabbit
Isotype	IgG
Size	20ul, 50ul, 100ul
Immunogen	The antiserum was produced against synthesized peptide derived from human XRCC4. AA range:261-310
Mol wt	38287
Species reactivity	Human
Clonality	Polyclonal
Recommended application	WB, ELISA
Concentration	1 mg/ml
Full name	XRCC4 Antibody
Synonyms	XRCC4; DNA repair protein XRCC4; X-ray repair cross-complementing protein 4

This product is for research use only, not for use in human, therapeutic or diagnostic procedure.

Background

DNA repair protein XRCC4 encoded by XRCC4 functions together with DNA ligase IV and the DNA-dependent protein kinase in the repair of DNA double-strand breaks. This protein plays a role in both non-homologous end joining and the completion of V(D)J recombination. Mutations in this gene can cause short stature, microcephaly, and endocrine dysfunction (SSMED). Alternative splicing generates several transcript variants.

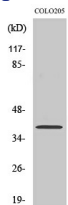
Recommended Dilution

WB: 1: 500 - 1: 2000

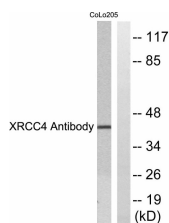
ELISA: 1: 20000

Not yet tested in other applications.

Images



Western Blot analysis of various cells using XRCC4 Polyclonal Antibody. Secondary antibody was diluted at 1:20000



Western blot analysis of lysates from COLO205 cells, using XRCC4 Antibody. The lane on the right is blocked with the synthesized peptide.

Storage

-20°C for one year

501 Changsheng S Rd, Nanhu Dist, Jiaxing, Zhejiang, China

Tel: 86 21 31007137 | E-mail: save@bt-laboratory.com | www.bt-laboratory.com