

XRN2 Polyclonal Antibody

Description

Product type	Primary Antibody
Code	BT-AP09629
Host	Rabbit
Isotype	IgG
Size	20ul, 50ul, 100ul
Immunogen	The antiserum was produced against synthesized peptide derived from human XRN2. AA range:81-130
Mol wt	108582
Species reactivity	Human, Mouse, Monkey
Clonality	Polyclonal
Recommended application	WB, IHC-p, ELISA
Concentration	1 mg/ml
Full name	XRN2 Antibody
Synonyms	XRN2; 5'-3' exoribonuclease 2; DHM1-like protein; DHP protein

This product is for research use only, not for use in human, therapeutic or diagnostic procedure.

Background

XRN2 encodes a 5'-3' exonuclease that promotes transcription termination at cotranscriptional cleavage sites. Alternative splicing results in multiple transcript variants encoding different isoforms.

Recommended Dilution

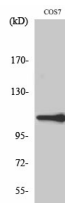
WB: 1: 500 - 1: 2000

IHC: 1: 100 - 1: 300

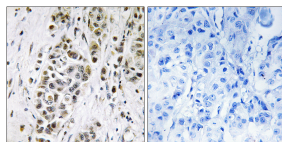
ELISA: 1: 20000

Not yet tested in other applications.

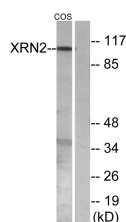
Images



Western Blot analysis of various cells using XRN2 Polyclonal Antibody diluted at 1:1000. Secondary antibody was diluted at 1:20000 cells nucleus.



Immunohistochemistry analysis of paraffin-embedded human breast carcinoma tissue, using XRN2 Antibody. The picture on the right is blocked with the synthesized peptide.



Western blot analysis of lysates from COS7 cells, using XRN2 Antibody. The lane on the right is blocked with the synthesized peptide.

Storage

-20°C for one year

501 Changsheng S Rd, Nanhu Dist, Jiaxing, Zhejiang, China

Tel: 86 21 31007137 | E-mail: save@bt-laboratory.com | www.bt-laboratory.com