

YEATS2 Polyclonal Antibody

Description

Product type	Primary Antibody
Code	BT-AP09634
Host	Rabbit
Isotype	IgG
Size	20ul, 50ul, 100ul
Immunogen	The antiserum was produced against synthesized peptide derived from human YEATS2. AA range:341-390
Mol wt	150782
Species reactivity	Human
Clonality	Polyclonal
Recommended application	WB, IHC-p, ELISA
Concentration	1 mg/ml
Full name	YEATS2 Antibody
Synonyms	YEATS2; KIAA1197; YEATS domain-containing protein 2

This product is for research use only, not for use in human, therapeutic or diagnostic procedure.

Background

YEATS2 is a scaffolding subunit of the ADA2A (TADA2A; MIM 602276)-containing (ATAC) histone acetyltransferase complex.

Recommended Dilution

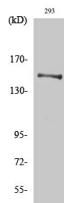
WB: 1: 500 - 1: 2000

IHC: 1: 100 - 1: 300

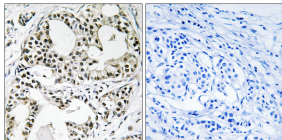
ELISA: 1: 5000

Not yet tested in other applications.

Images



Western Blot analysis of various cells using YEATS2 Polyclonal Antibody. Secondary antibody was diluted at 1:20000 cells nucleus.



Immunohistochemistry analysis of paraffin-embedded human breast carcinoma, using YEATS2 Antibody. The picture on the right is blocked with the synthesized peptide.

Storage

-20°C for one year