

ZADH2 Polyclonal Antibody

Description

Product type	Primary Antibody
Code	BT-AP09643
Host	Rabbit
Isotype	IgG
Size	20ul, 50ul, 100ul
Immunogen	The antiserum was produced against synthesized peptide derived from human ZADH2. AA range:191-240
Mol wt	40140
Species reactivity	Human, Mouse, Rat
Clonality	Polyclonal
Recommended application	WB, IHC-p, ELISA
Concentration	1 mg/ml
Full name	ZADH2 Antibody
Synonyms	ZADH2; Zinc-binding alcohol dehydrogenase domain-containing protein 2

This product is for research use only, not for use in human, therapeutic or diagnostic procedure.

Background

ZADH2 (zinc binding alcohol dehydrogenase domain containing 2) is a 377 amino acid protein that belongs to the zinc-containing alcohol dehydrogenase family and is encoded by a gene which maps to human chromosome 18. Chromosome 18 houses over 300 protein-coding genes and contains nearly 76 million bases. There are a variety of diseases associated with defects in chromosome 18-localized genes, some of which include Trisomy 18 (also known as Edwards syndrome), Niemann-Pick disease, hereditary hemorrhagic telangiectasia, erythropoietic protoporphyria and follicular lymphomas.

Recommended Dilution

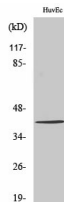
WB: 1: 500 - 1: 2000

IHC: 1: 100 - 1: 300

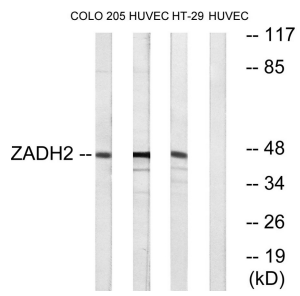
ELISA: 1: 10000

Not yet tested in other applications.

Images



Western Blot analysis of various cells using ZADH2 Polyclonal Antibody. Secondary antibody was diluted at 1:20000



Western blot analysis of lysates from HUVEC, HT-29, and COLO cells, using ZADH2 Antibody.
The lane on the right is blocked with the synthesized peptide.

Storage

-20°C for one year

501 Changsheng S Rd, Nanhu Dist, Jiaxing, Zhejiang, China

Tel: 86 21 31007137 | E-mail: save@bt-laboratory.com | www.bt-laboratory.com