

EP3A Rabbit Polyclonal Antibody

Description

Product type	Primary Antibody
Code	BT-AP09650
Host	Rabbit
Isotype	IgG
Size	20ul, 50ul, 100ul
Immunogen	Synthesized peptide derived from human EP3A
Mol wt	16170
Species reactivity	Human, Rat, Mouse
Clonality	Polyclonal
Recommended application	WB
Concentration	1 mg/ml
Full name	EP3A
Synonyms	EP3A

This product is for research use only, not for use in human, therapeutic or diagnostic procedure.

Background

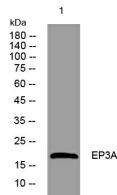
Testicular sperm are morphologically differentiated but are not progressively motile nor able to fertilize an egg. Post-testicular maturation requires exposure of spermatozoa to the microenvironment of the epididymal lumen. Spermatozoa undergo extensive changes in the epididymis including enzymatic modifications, loss of pre-existing components and addition of new glycoproteins from epididymal secretions. These modifying proteins and enzymes are synthesized by epithelial cells lining the epididymal duct and secreted apically into the lumen where they come into contact with and may be absorbed onto the sperm membranes. The proteins encoded by the genes in this cluster are synthesized and secreted by epididymal epithelial cells.

Recommended Dilution

WB: 1: 500 - 1: 2000

Not yet tested in other applications.

Images



Western blot analysis of lysates from Jarkat cells, primary antibody was diluted at 1:1000, 4°C overnight

Storage

-20°C for 1 year