

ZBTB40 Polyclonal Antibody

Description

Product type	Primary Antibody
Code	BT-AP09656
Host	Rabbit
Isotype	IgG
Size	20ul, 50ul, 100ul
Immunogen	The antiserum was produced against synthesized peptide derived from human ZBTB40. AA range:1121-1170
Mol wt	138118
Species reactivity	Human, Mouse
Clonality	Polyclonal
Recommended application	WB, IHC-p, ELISA
Concentration	1 mg/ml
Full name	ZBTB40 Antibody
Synonyms	ZBTB40; KIAA0478; Zinc finger and BTB domain-containing protein 40

This product is for research use only, not for use in human, therapeutic or diagnostic procedure.

Background

May be involved in transcriptional regulation.

Recommended Dilution

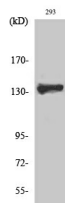
WB: 1: 500 - 1: 2000

IHC: 1: 100 - 1: 300

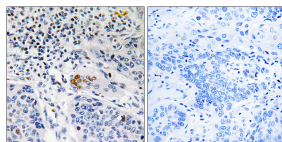
ELISA: 1: 10000

Not yet tested in other applications.

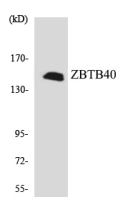
Images



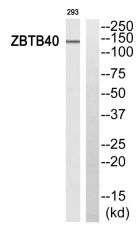
Western Blot analysis of various cells using ZBTB40 Polyclonal Antibody. Secondary antibody was diluted at 1:20000 cells nucleus.



Immunohistochemistry analysis of paraffin-embedded human lung carcinoma tissue, using ZBTB40 Antibody. The picture on the right is blocked with the synthesized peptide.



Western blot analysis of the lysates from HUVEC cells using ZBTB40 antibody.



Western blot analysis of ZBTB40 Antibody. The lane on the right is blocked with the ZBTB40 peptide.

Storage

-20°C for one year

501 Changsheng S Rd, Nanhu Dist, Jiaxing, Zhejiang, China

Tel: 86 21 31007137 | E-mail: save@bt-laboratory.com | www.bt-laboratory.com